

# GumLeaf

Gutter Protection

Stainless Steel  
Micro Mesh

- Marine grade 316 Stainless Steel
- The Best Gutter Guard Available
- Has the smallest hole size in Australia
- At least no mosquitos breeding in your gutters
- Allows 150 inches of water per hour

## Tile Roofing

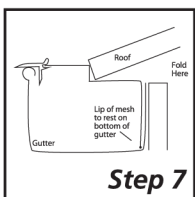
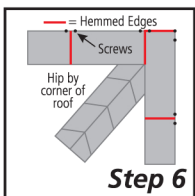
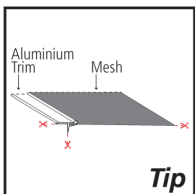
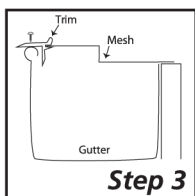
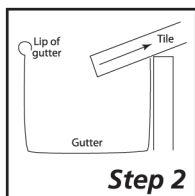
### Tools Required

Power drill, tin snips, 1/4 inch magnetic hexagon head socket, Gumleaf screws (do not use stainless steel screws), silicone gun, silicone, wide nose pliers and gloves

1. Measure total length of gutters and allow approximately 5% extra for overlap and wastage. Note each piece of gutter guard is 1.2m long.
2. Measure the "FOLD." This is the distance from the middle of the gutter lip to the edge of the tiles. 80mm is available on the shelf with 70, 90, & 100 fold and flat pieces at the Specials Orders desk.

### Installing on a Tile Roof

1. Clean gutters thoroughly and flush downpipes.
2. Slide first row of tiles back to expose the fascia boards.
3. Place guard on gutter beginning at one end. Drill self-tapping screws through trim of guard on each end and in the middle of the guard. For a tile roof, you may also drill a screw through the mesh and onto the fascia board. **Tip: To cut trim, cut all 3 sides and snap backwards.**
4. Overlap the guard mesh making the two trims touch.
5. Slide tiles back into position.
6. At the corners of the roof, cut desired length of guard. Use pliers to straighten bent trim. Allow mesh to stick out approximately 1 cm on each side of trim. Then fold the 1cm edge in half, underneath to create a "hemmed" edge. This allows for a neater finish. **TIP: Squash the hem with pliers.**
7. Note that tiles at the corners of the roof cannot slide back, fold down the back section of tile guard to make a double fold. Fold over a 90 degree straight edge. You will need to cut out the mesh to allow for internal brackets if any. If required cut off the front trim and tuck mesh under front gutter lip.
8. Patch and silicone the gaps around the corners.



**SAFETY STATEMENT:** Utmost care must be taken when working at heights. Installer must comply with workplace health and safety regulations in your area, including using approved tools and a harness when needed. Be aware of sharp edges.

- America's Leading Gutter Protection
- Built-in Trim with Water Diverter Technology
- Crimped Mesh for Added Strength

For Instructions visit

[www.diygutterguard.com.au](http://www.diygutterguard.com.au)